

Life Preservation Initiative

2020 Impact Report

United We Stand

Daofeng & Angela Foundation

932 Hungerford Dr. Suite 11B, Rockville,
MD 20850, United States

lifepreservation.org



Daofeng He

President of Daofeng & Angela Foundation

As the famous author of Democracy in America Alexis de Tocqueville suggested, the essence of the American spirit is rooted in the self-governance of its people, in a community spirit. And that is based on the desire of people to voluntarily help one another. To volunteer - that is what brought all of us here today – our efforts to help in this pandemic. But have you asked yourself: what is the spiritual source of our voluntary acts? Why should we help one another, why should we stand united in crisis, and even in peace? The answer, my friend, is unwavering faith in God. God is the fountainhead of all goodness within us.

When COVID-19 hit America, I realized this was God's calling for us to work together and preserve lives. My wife and I pledged to donate \$1 million dollars, and through the Daofeng and Angela Foundation, we launched the Life Preservation Initiative (LPI), bringing together 13 Asian-American and Asian organizations to help support the fight. LPI identified the needs and focused on providing PPE to our frontline healthcare workers for saving lives and to the vulnerable communities for slowing the spread of the virus.

We didn't do this alone: LPI has become a movement of 84 volunteers from 14 cities. We sourced our PPE from Japan, the US, and China after contacting over 100 suppliers. It hasn't always been a smooth road, but we've understood our mission: we are responding to God's calling: Fight against COVID-19, United, We Stand!

Introduction

Life Preservation Initiative is a coalition among Non-Governmental Organizations that is helping frontline healthcare professionals and vulnerable communities fight COVID-19 by providing them with critical personal protective equipment (PPE).

The coronavirus pandemic has become a global threat. With the United States now having the most confirmed cases in the world, and New York being the American epicenter, the local need for personal protective equipment (PPE) is at an all-time high.

On March 23rd, 2020, four American nongovernmental organizations (NGOs) partnered with three Chinese NGOs to form the COVID-19 Life Preservation Initiative. Together, we hope to fight the pandemic hand in hand with the rest of the US, by helping to protect healthcare workers, first responders, community volunteers, and vulnerable populations. It is our human calling to help one another, regardless of our politics, borders, religion, or race. To defeat COVID-19, we must put aside all biases, prejudices, and preconceptions. United we stand. Divided we fall.

The Daofeng and Angela Foundation led the way to create this initiative and donated over **\$1,000,000**. The movement involved 13 partners, 84 volunteers from 14 cities in the United States, and China. Based in Maryland, the Daofeng and Angela Foundation sees the initiative as an effort to mobilize civil society in different countries to overcome a shared crisis and foster self-governance and civic awareness in the process.

Through June 26, 2020, we have donated over **980,000 PPEs** to over **25 hospitals** and **30 non-profit and public office recipients** in **New York, Connecticut, D.C., Maryland, New Orleans, and Boston**. In total, we have acquired nearly **90,000 N95** masks from the US and Japan and around **1 million single-use masks** from China, which arrived in 7 batches and were distributed to the communities in need.

Our Mission

Our mission is to unite to fight against COVID-19 and preserve lives by:

Protect Healthcare Professionals

We focus on protecting healthcare professionals working in the front lines of COVID-19, and supporting the healthcare system to preserve lives.

Protect Vulnerable Communities

We focus on protecting public service workers, first responders, and community volunteers, as well as vulnerable members of the public to reduce COVID-19 infection rates in high-risk communities.

Promote Civic Engagement and Collaboration

We hope to enhance civic engagement and community development. We also hope our efforts will encourage more collaborations among nonprofits and volunteer groups to rebuild communities after major disasters, thus promoting the values of universal love and humanitarianism.

Why We Donate PPEs

In the early stage of the Covid-19 outbreak in the United States, especially from March to May, PPEs such as N95, medical disposable masks and coveralls were in short supply, causing a large number of healthcare workers to carry out treatment in a high risk of infection without the necessary protective measures.

At the same time, in the community, non-profit organizations that support the basic needs of vulnerable groups, such as food relief and shelters, have to reduce their service scale or close their services due to the lack of PPEs to protect their staff and volunteers. However, the economic crisis triggered by the pandemic has led to a wave of unemployment, and the services of such institutions have become increasingly necessary.

Given that China has the world's most adequate supply chain of medical supplies, and the LPI team has the resources and capabilities to cooperate with Chinese NGOs to carry out cross-border procurement, we decided to donate scarce PPEs rather than money to respond to the crisis.



The Challenge of Sourcing Masks

The FDA's changing attitudes towards Chinese masks have made the project complicated. In addition, the export /import rules between China and the US, along with tightened airline restrictions, have made the project very challenging.

It's hard to find reliable vendors and avoid being scammed.

In order to find reliable suppliers, LPI Procurement Team members **consulted more than 100 manufacturers**. American Physicians helped them vet the PPE products. There were times when the physicians would reject more than 10 supply sources in a day.

When the Requirements Change

Not only the U.S. requirements for masks kept changing, but also the Chinese requirements for customs have changed. LPI Procurement Team members were under a lot of pressure to make immediate decisions to meet every change of requirements while International flights and other logistic channels were tightening at the same time.

Finally, LPI has purchased 920,000 single-use masks from China, 28,350 N95 from Tokyo, 59,850 N95 from California and Minnesota, and 9,000 single-use masks and 94 coveralls from Seattle (Figure 1), which arrived in 7 batches.



Figure 1 Where to Purchase PPEs

“What LPI is doing is especially critical, as it is quite important to let people know that we have friends all over the world to help with the struggle against COVID-19.”

Thomas O Fox, Ph.D., Associate Dean for Graduate Education and Director of Graduate Studies at Harvard Medical School (HMS), our volunteer in Boston



Our Approach to Pandemic

In order to effectively respond to the covid-19 pandemic, we have adopted the following strategies on how to donate mask resources:

I. PPEs for hospitals - Prevent the collapse of the medical system

We provide professional PPEs, such as N95, medical disposable masks, protective clothing, and goggles, for hospitals to protect healthcare workers on the front line and avoid the collapse of medical resources.

II. PPEs for public service workers - Protect the safety of anti-pandemic key node in high-risk communities

We provide PPEs to the first-responders of the EMS stations of the Fire Department and policemen responsible for rescuing and transporting people infected with the virus. These people play key roles to protect public health in local communities during the pandemic.

III. PPEs for NPOs - Protect vulnerable groups in high-risk communities

We provide disposable masks for NPOs that guarantee the basic survival needs of vulnerable groups in the community, such as food delivery organizations and shelter organizations.

Our Impact

980,293 PPEs	25 Hospitals	30 Community recipients	6 Metro Areas	84 Volunteers
-------------------------------	-------------------------------	--	--------------------------------	--------------------------------

From March 23rd to June 26, 2020, we have donated **980,293 PPEs** to **25 hospitals** and **30 nonprofit organizations and public offices** in **New York, Connecticut, D.C., Maryland, New Orleans, and Boston**.

Among these donated PPEs, 73,500 pieces of N95, 98,400 pieces of disposable medical masks and 1,069 pieces of coveralls, and 2,044 pieces of other medical supplies (such as shoe covers, goggles, medical gloves and alcohol) were used to support healthcare workers in 25 hospitals; 14,280 pieces N95 and 791,000 disposable masks are used to support public service agencies and NPOs in the community (Figure 2 & Table 1).

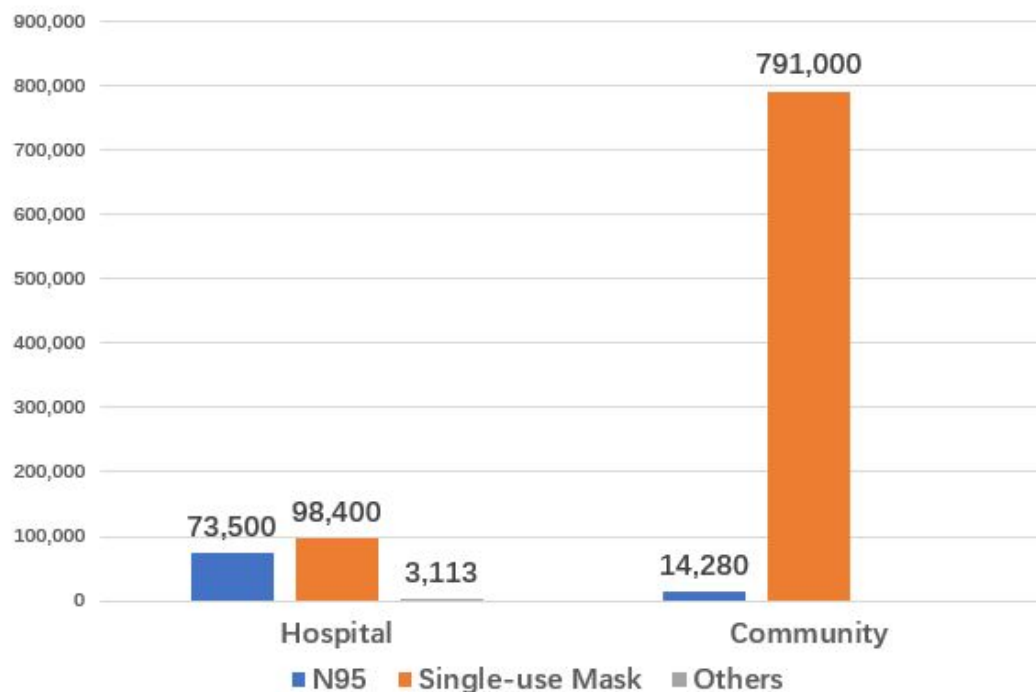


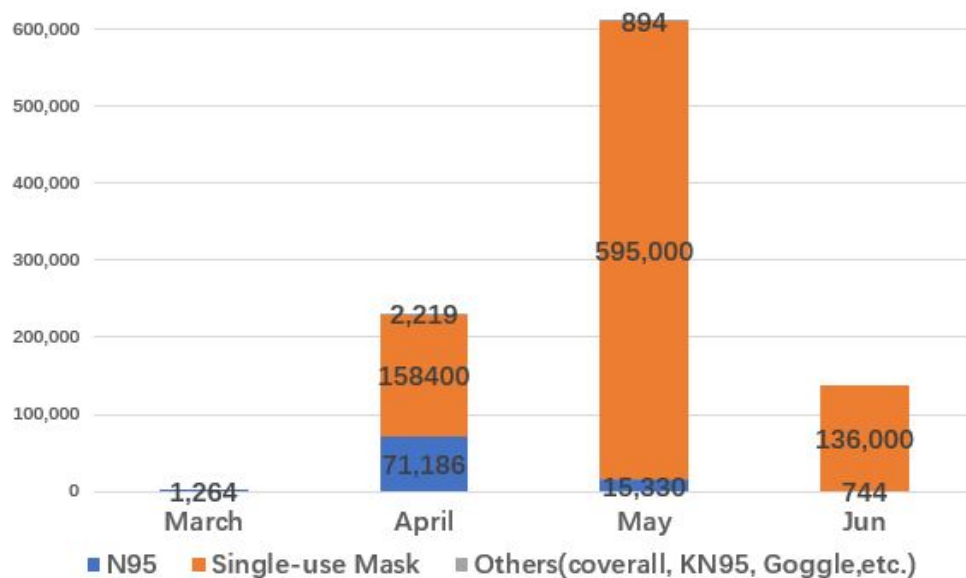
Figure 2 Where to Donate

Table 1 Where to Donate

PPEs	Community (public offices & NPOs)	Hospitals	In Total
N95	14,280	73,500	87,780
Single-use Mask	791,000	98,400	889,400
Coverall	0	1,069	1,069
Others	0	2,044	2,044
In total	805,280	175,013	980,293

Two Phases: From Hospitals to Communities

The support for hospitals was concentrated in April when the rapid increase in infection cases resulted in the most shortage of PPE resources. Starting in May, the focus of LPI's support work has shifted to the community (Figure 3) based on the increasing needs of community support.

**Figure 3 LPI PPEs Monthly Donation**

How Do We Select The Receiving Hospitals And Communities?

We have contacted hospitals and verified their shortage for PPE. Based on this information, we aim to help the ones facing the most critical shortage and procurement difficulties. We have established key contacts in these hospitals to directly receive our donations on the ground.

For vulnerable communities, we are donating single-use masks to

- 1) local non-profits who will use the mask to protect their staff, volunteers, the vulnerable population they serve, and other high-risk community service workers. The non-profits we select have a strong track record in helping vulnerable and vulnerable communities, which we do not.
- 2) We are also donating single-use masks to public service workers (such as police officers and firefighters) that are serving vulnerable communities.

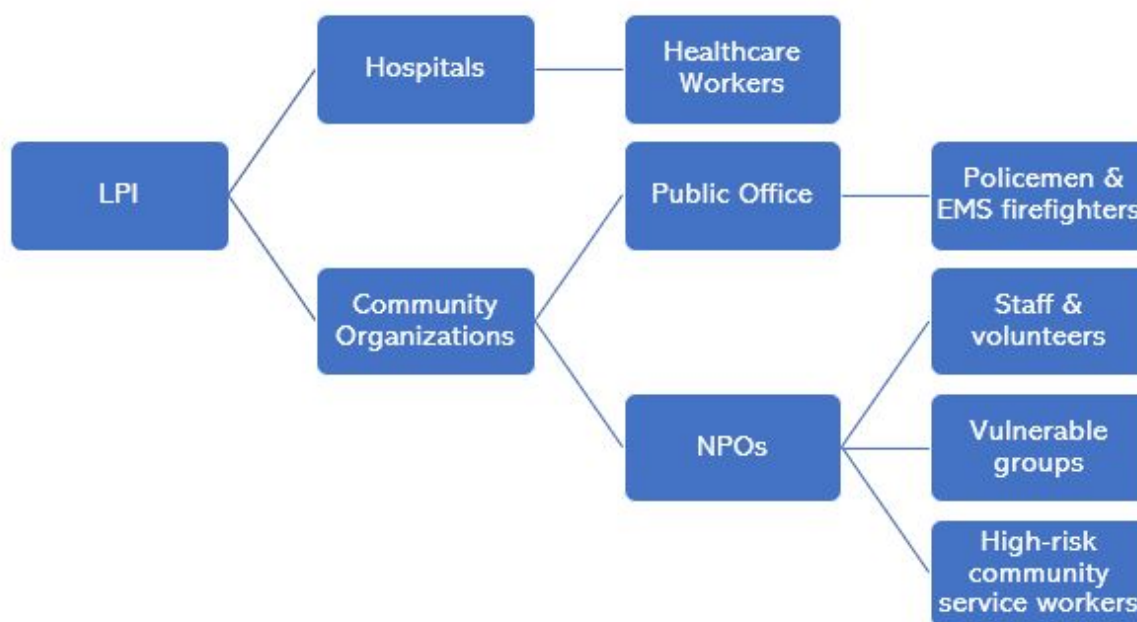


Figure 4 LPI PPEs Delivery Flow

We are proud to be supporting those fighting on the frontline everyday for our well-being.

Our patients are disproportionately affected by the COVID-19 crisis due to their compromised immune systems, so we are especially grateful for the equipment you provided to help us protect them and their caregivers. Cancer does not wait while the world adapts to the current crisis.

Joshua T. Currier, Dana-Farber Cancer Institute

Hospitals We Supported

We have learned that many healthcare workers persist in saving lives on the front line despite the lack of protective materials. A hospital has no protective clothing, it can only find a raincoat company to donate a batch of raincoats instead. A pregnant nurse can only wear hand-made masks to care for infected patients. These circumstances prompt us to evaluate and deliver PPEs as quickly as possible. When we evaluate hospitals, we focus on the following aspects:

1. The number of patients in ICU with Covid19 admitted to the hospital;
2. The number and growth rate of local infection cases;
3. The degree of a shortage of medical supplies;
4. The hospital's presence in vulnerable groups' word of mouth in terms of treatment.

From the end of March to the first week of May, LPI has provided **175,013** PPEs to **25** hospitals and members of the Association of Chinese American Physicians (Table 2).

Table 2 Hospital Delivery List

Hospital List	PPEs	Amount	Delivery Date
Washington DC			
MedStar Washington Hospital Center	N95	2310	2020/4/8
MedStar Georgetown University Hospital	N95	3990	2020/4/8
Washington DC Veterans Affairs Medical Center	N95	4200	2020/5/13
	Single-use Mask	14000	2020/5/13
	coverall	294	2020/5/13
Maryland			
Adventist Healthcare Shady Grove Medical Center	N95	1260	2020/4/8

Suburban Hospital	N95	1680	2020/4/8
Johns Hopkins Hospital	N95	2100	2020/4/8
Kaiser Permanente Headquarters	N95	4830	2020/4/17
Holy Cross Hospital	N95	6930	2020/4/17
Mercy Medical Center in Baltimore	N95	7980	2020/4/17
Doctors Community Hospital	N95	4200	2020/4/20
New York			
Association of Chinese American Physicians	N95	1264	2020/3/25
Montefiore Medical Center	N95	1050	2020/4/7
Mount Sinai Beth Israel	N95	840	2020/4/8
SUNY NGO Downstate / Kings County Hospital Medical Center New York	N95	2310	2020/4/8
The Brooklyn Hospital Center	N95	2520	2020/4/8
NY NGOU Langone Health	N95	1890	2020/4/9
Maimonides Medical Center	N95	1890	2020/4/9
Elmhurst Hospital	N95	2100	2020/4/9
The Brooklyn Hospital Center	N95	2520	2020/4/23
Staten Island University Hospital	N95	5040	2020/4/23
SUNY NGO Downstate University Hospital of Brooklyn	Coverall	175	2020/4/23
	Coverall	200	2020/5/1
Association of Chinese American Physicians	Gloves	700	2020/4/26
Association of Chinese American Physicians	N95	206	2020/4/26
Association of Chinese American Physicians	KN95	176	2020/4/26
Association of Chinese American Physicians	Goggles	6	2020/4/26
Association of Chinese American Physicians	foot cover	1080	2020/4/26
Association of Chinese American Physicians	Rubbing Alcohol	82	2020/4/26

Association of Chinese American Physicians	Single-use Mask	4400	2020/4/26
Montefiore Medical Center	Coverall	100	2020/5/5
Connecticut			
Yale School of Medicine & Yale New Haven Psychiatric Hospital	N95	3150	2020/4/14
	Single-use Mask	20000	2020/4/14
	Single-use Mask	10000	2020/4/16
	N95	2100	2020/5/4
	coverall	300	2020/5/4
Boston			
Massachusetts General Hospital (MGH), Brigham & Young Women Hospital, Dana-Farber Cancer Institute	Single-use Mask	20000	2020/4/21
	N95	2100	2020/4/22
Massachusetts General Hospital (MGH)	N95	2100	2020/5/5
New Orleans			
Tulane Medical Center	N95	840	2020/5/4
	Single-use Mask	8000	2020/5/4
University Medical Center (Tulane)	N95	2100	2020/5/4
	Single-use Mask	22000	2020/5/4
In Total		175,013	



Words from a Nurse at Mount Sinai Beth Israel

We had the opportunity to talk to a registered nurse at Mount Sinai Beth Israel hospital in New York. She requested to stay anonymous. The following is a piece of her experience during the COVID-19 crisis:

“

My work is my choice. It is my duty to take care of the patients.

What really touched me has been the help and support coming from all directions, including the Life Preservation Initiative as well as the support from the folks in my city.

Ever since the state government closed down all non-essential businesses, there have been meals delivered to the hospital every day, from different restaurants, organizations, and individuals.

Walking on the streets, lots of people say hi to me and even bow to me. An old lady sitting at the flower bed while I was walking by told me to take care. Even those smoking on the street corners would wave at me and tell me to have a nice day.

7 o'clock every evening is the time the New Yorkers give standing ovations and celebrate those still working during this crisis.

”

Being in the presence of such support, you don't feel like you are fighting alone.

Public Service Offices We Supported in NY

When the pandemic broke out in the United States, New York became the center of the storm. When we investigated the community's needs in Great New York, we found that workers who provide basic public services in high-risk communities urgently need PPEs.

Both EMS Station workers and police officers on duty in high-risk communities need to respond to requests for help from the infected public, so we included the police and fire rescue stations in the scope of donations.



On April 24, LPI delivered 2,100 N95 to FDNY EMS STATION 08

Why Do They Need N95?

EMS Stations of the Fire Department play an important role to transfer infected people from communities to hospitals.

Take the FDNY EMS STATION 08 of the Fire Department of New York as an example. There are 7 ambulances in this station. During the peak of the epidemic in April, an infected patient is transported every hour.

They have disposable masks, but as a high-risk group, they lack professional Protective mask N95, and the consumption of masks has reached 336 per day.



LPI provided a total of 31,130 PPEs to the public service sector, including 20,000 disposable masks and 11,130 N95 (Table 3) .

Table 3 Public Service Offices Delivery List

Name	PPE	Amount	Delivery Date
New York Office of Chief Medical Examiner	N95	2,100	2020/4/9
NY NYPD Quartermaster & Patrol Borough Brooklyn North	Single-use Mask	20,000	2020/4/20
NY NGO Fire Department EMS Station 08	N95	2,100	2020/4/24
NY NGO Fire Department EMS Station 31	N95	2,100	2020/4/24
NY NGO Fire Department Local 2507	N95	2,940	2020/4/24
NY NGO Fire Department EMS Station 08	N95	1,470	2020/5/8
New York City Deputy Sheriffs' Association	N95	420	2020/5/8
In Total		31,130	

Words from Nonprofit Organizations We Supported

"These masks are a critical protective measure. They are helping the women and children House of Ruth serves greatly decrease their risk of contracting COVID-19, and they are helping to prevent the spread of the virus in Washington D.C. The masks are also providing protection to House of Ruth staff."

House of Ruth

"Considering the size of the gift from LPI, we will have a sufficient supply of masks for quite some time. we could confidently guide our local personnel to distribute masks freely to the public."

The Salvation Army Great New York Division

"We have had many recipients thank us for the donated masks. We had one adult who cried to know that we cared for her family in this way. She was now able to have masks to go to grocery stores to buy food for her family."

Steven Park, Executive Director of Little Lights

"It is our understanding the masks helped slow down the rate of infection in Baltimore City communities. This donation has enabled residents who were primarily sheltered at home to access essential services such as grocery stores, doctor/medical appointments, and use public transportation...The initiative has also strengthened the collaboration across city agencies and partners allowing us to collectively reach the most seniors and vulnerable residents."

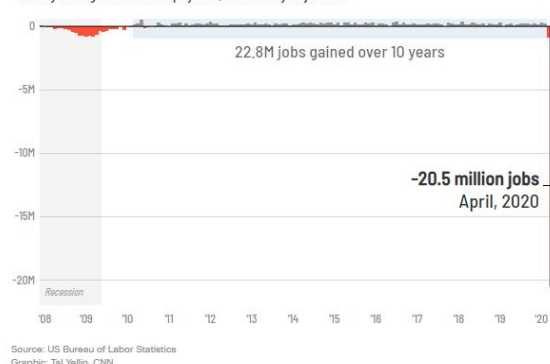
The Salvation Army of Central Maryland and Action in Maturity

Nonprofit Organizations We Supported

In this pandemic crisis, people are not only facing the threat of the virus to their lives, but also have to face the survival problems caused by the economic crisis—food shortages and homelessness.

Worst US jobs report on record

Monthly change in nonfarm payrolls, seasonally adjusted.



According to the US Bureau of Labor Statistics, 20.5 million American jobs were lost in April. Unemployment rate soars to 14.7%.

Now, the coronavirus pandemic stings not only because of the public health crisis it has inflicted — but also because it wiped out nearly that whole decade of job gains in just two months.

Anneken Tappe, CNN Business, May 8, 2020

The impact of unemployment on vulnerable groups is reflected in the increasing demand for food and shelter aid. In addition, due to the threat of the virus, a large number of public schools have closed, and families of school-age children who rely on the free meal system of public schools have also been affected. The lack of protective materials for volunteers in community food delivery organizations has affected the senior citizens who rely on them to deliver meals. Citywide restrictions also have left homeless without access to hygiene facilities, safe shelter and food supplies.

Thus, LPI has focused on providing PPEs for non-profit organizations who mainly provide basic need service for vulnerable groups and high-risk groups including:


- Individuals and families who are street-homeless or housing-insecure
- Senior citizens and those who need home-delivery meals
- School-age children and university students
- Households with no income, limited income, or fixed income
- Workers who provide basic services to ensure urban operations

The masks donated by LPI were used for **three purposes**:

1. For the employees and volunteers of these NPOs to provide services to protect their health;
2. To be distributed by the NPOs to the vulnerable groups they served;
3. To be distributed to the high-risk public service workers through these NPOs.

From April to June, LPI has donated **774,150** PPEs to Nonprofit Organizations and their partners in New York, Washington DC, Maryland, New Orleans, and New Haven. Table 4 shows the details about how our donations support the communities through these organizations.

Table 4 How the Mask Donations Support the Communities

New York			
	PPE Donated 381,150 Partner Organization Numbers 6		
NPO Name	Beneficiaries		
	Staff and Volunteers	Vulnerable Groups	High-risk Public Service Workers
New York City Relief and Rescue Alliance	√	√	
Donation Size	38,000 Single-use Masks		
NYC Relief serves the homeless and low-income residents of the NYC metro area. The majority of the people we serve are African-American or Hispanic between the ages of 18 and 65, but the faces of the homeless and hungry are diverse and include many other ethnic groups and all ages.			

The following is an approximate breakdown of the population we serve by category:

- Ethnicity: African American 55%
- Latino 25%
- Caucasians 10%
- Asian American 5%
- Other 5%
- Gender: Men 60%
- Women 39%
- Age: Under 30 8%
- 30 - 54 46%
- 55 and over 46%

Since the start of the COVID-19 pandemic in mid-March NYCRC has served at least 9,000 unique persons with over 22,000 meals and 34,000 beverages, over 25,000 Bombas socks, over 10,000 hygiene kits, and over 10,000 masks. Overall we are serving around double the amount of meals and people (1000+ guests per week) in just over half the time with less available staff, volunteers, and other resources due to the COVID-19 outbreak - nevertheless, we intend to continue these efforts during the current crisis, for as long as they are needed.

The generous donation of masks from The Life Preservation Fund allows New York City Relief to provide EVERY GUEST for 3-4 months (approximately 2,000 masks distributed each week) critical personal protective equipment (PPE) to stop the spread of COVID-19 within the homeless community and ensure homeless persons will be able to meet NYC requirements to avoid fines and other consequences.

NPO Name	Beneficiaries		
	Staff and Volunteers	Vulnerable Groups	High-risk Public Service Workers
The Bowery Mission	√	√	
Donation Size	50,000 Single-use Masks		

Throughout the global pandemic we have:

- Served over 127,000 meals, provided over 32,500 nights of shelter and over 1,400 mobile showers.
 - o 21% Female and 79% Male
 - o 50% African American, 21% Caucasian/White, 20% Hispanic, 7% Multi-ethnic or Other, 1% Asian/Pacific Islander, and 1% Native American
 - o 6% = 18-25 years old; 20% = 26-35 years old; 24% = 36-45 years old; 29% = 46-55 years old, 20% = 56-65 years old; and 1% = 66 years old or older
- Housed 1,062 unique guests at the Tribeca Campus Emergency Shelter
- 188 clients in our residential programs at our Bowery, Upper East Side, East Harlem and West Harlem campuses

With the support of the Life Preservation Initiative, we have managed to provide 21,824 masks to

guests, clients, staff and volunteers. Averaging a usage of 2,728 masks a week or 390 a day , this donation will allow us to continue to distribute the necessary PPE for the next couple of months.			
NPO Name	Beneficiaries		
	Staff and Volunteers	Vulnerable Groups	High-risk Public Service Workers
Roman Catholic Diocese of Brooklyn & catholic charity, Emergency Task Force	√	√	√
Donation Size	120,000 Single-use Masks		
<p>The users of the first round masks donated were civilians and members of the surrounding neighborhood of the pop-up and walk-in centers. Over the course of six weeks, the Emergency Task Force alongside the Catholic Charities of Brooklyn and Queens were able to distribute approximately 20,000 of these masks to very deserving individuals. With an increase of over 200% in demand of food at their pantries the LPI has been able to provide over 71,400 meals at emergency Pop-Up Food Distributions in Brooklyn and Queens and over 100,000 meals total at their food pantries.</p> <p>Most of the second round masks were distributed to the priests and laity working at the following locations in Brooklyn and Queens: Our Lady of Sorrows, Corona; Blessed Sacrament, Cypress Hills; Blessed Sacrament, Jackson Heights; St. Leo, Corona; St. Bartholomew, Elmhurst; St. Joan of Arc, Jackson Heights; St. Sebastian, Woodside; Transfiguration, Williamsburg; Holy Spirit, Boro Park; St. Matthew, Crown Heights; St. Michael-St. Malachy, East New York; St. Joseph Patron, Bushwick; and Resurrection Ascension, Rego Park.</p> <p>The rest of this donation of masks went to various law enforcement groups in and around New York City, who still had not been given masks and other PPE to protect them, even as they face the challenges of crowd control and keeping the peace amid the extraordinary civil unrest the United States has been facing for the past several weeks.</p>			
NPO Name	Beneficiaries		
	Staff and Volunteers	Vulnerable Groups	High-risk Public Service Workers
Lutheran Social Services of New York	√	√	
Donation Size	20,000 Single-use Masks		
<p>At Home LIFE center, we derive our focus in promoting safety and self-efficiency. Our aim is to assist people with severe and persistent mental health conditions, history of addiction and substance usage, low income families and vulnerable communities who are susceptible to homelessness.</p>			

At each of our six residences, nearly 538 individuals and families receive tailored residential supportive services. The communities and populations that we serve are deemed as high risk due to their underlying health conditions.

Due to your donation, we were able to fulfill temporary relief for both residents and staff members who are undergoing tremendous fear and anxiety.

NPO Name	Beneficiaries		
	Staff and Volunteers	Vulnerable Groups	High-risk Public Service Workers
The Salvation Army Great New York Division	√	√	
Donation Size	150,000 Single-use Masks, 2,940 N95		

Across our Greater New York Division, our 37 locations serve an average of 112 people per day. In New York City, this number is closer to 130 people per day, per location.

In June, our locations distributed nearly 20,000 masks to the public, at a recent average of about 30 masks per location per day. The number of masks used by staff and volunteers is around 10-15 per location per day.

As far as the type of clients at each location, the following demographic groups comprise a large portion of the population served by The Salvation Army:

- Individuals and families who are street-homeless or housing-insecure
- Migrant populations, whether documented, undocumented, or mixed-documentation households
- Senior citizens (served by home delivery wherever possible)
- Those with chronic medical or mental health conditions (served by home delivery wherever possible)
- School-age children
- Households with no income, limited income, or fixed income

Considering the size of the gift from LPI, we will have a sufficient supply of masks for quite some time. we could confidently guide our local personnel to distribute masks freely to the public.

NPO Name	Beneficiaries		
	Staff and Volunteers	Vulnerable Groups	High-risk Public Service Workers
Harbor Hilling Housing	√		
Donation Size	210 N95		

Harbor Hill Housing provides Low Income-Affordable to Seniors in Brooklyn, NY. This is a seven-story 87 units Senior property built in 1994 with 10 employees and 150 seniors. LPI donation will be used for employees and volunteers to provide service for these seniors.

Washington DC



PPE Donated

195,000

Partner Organization Numbers

5

NPO Name

Beneficiaries

Staff and Volunteers

Vulnerable Groups

High-risk Public Service Workers

WeCare

✓

✓

Donation Size

9,000 Single-use Masks

We Care is a grassroots christian organization in DC. The 9,000 masks donated by LPI will be distributed to volunteers, members and the public in the church area to protect their health.

NPO Name

Beneficiaries

Staff and Volunteers

Vulnerable Groups

High-risk Public Service Workers

House of Ruth

✓

✓

Donation Size

80,000 Single-use Masks

Our mission is to “empower women, children and families to rebuild their lives and heal from trauma, abuse and homelessness.”

Individuals benefiting from the Life Preservation Initiative donation are survivors of homelessness and abuse living in Washington, D.C.

Masks were received and distributed to clients across all 14 supportive housing programs run by House of Ruth. Clients began using the masks right away and the generous supply is still supporting the needs of our clients. Annually our housing programs for single women serve 190 women, and our family programs serve 100 mothers and 180 children.

House of Ruth shared masks from this generous donation with our partner agencies who also serve survivors of abuse and homelessness in Washington, D.C. A total of 30,000 masks were shared with DASH DC, DC Safe, My Sister's Place, Calvary Women's Services and Community Family Life Services. Each partner received 6,000 masks.

NPO Name	Beneficiaries		
	Staff and Volunteers	Vulnerable Groups	High-risk Public Service Workers
Little Lights Urban Ministries	√		
Donation Size	6,000 Single-use Masks		

Little Lights has so far distributed 4200 masks to 455 families donated by Flagstone Foundation. We will be distributing the remainder of the masks in the coming weeks.

Little Lights serves very low income residents in Washington, DC primarily living in public housing (Potomac Gardens, Hopkins, and Benning Terrace). The average household income for our families is less than \$15,000 per year.

We have had many recipients thank us for the donated masks. We had one adult who cried to know that we cared for her family in this way. She was now able to have masks to go to grocery stores to buy food for her family.

The masks have definitely made the communities we serve safer. We have not heard of many positive cases in our communities so far.

NPO Name	Beneficiaries		
	Staff and Volunteers	Vulnerable Groups	High-risk Public Service Workers
Central Union Mission	√	√	
Donation Size	30,000 Single-use Masks		

Central Union Mission serves people who are experiencing homelessness as well as those who don't have enough food to get through the week – many of whom have lost their incomes during this pandemic and have no other safety net to fall back on. The Mission is reaching thousands of people in need at its shelter, Family Ministry Center and through partner organizations that are likewise serving the poor. The donation of 30,000 masks are used in the following programs:

- Family Ministry Center

Every month, we serve 4500 people who are in desperate need of groceries. Along with a cart full of food and cleaning products, we are distributing 3-4 masks to each person, as needed. Everyone that the Family Ministry serves lives below the poverty line. The majority are African American and Hispanic – and in recent weeks, the number of Hispanic people seeking emergency

support has doubled as so many have lost their jobs and are unable to work. Many of those we serve have underlying health issues and 31% are over the age of 60 – making them at high risk of complications from the coronavirus.

- Emergency Homeless Shelter

The Mission serves up to 200 people every day through its emergency homeless shelter – both residents who are sheltering-in-place with us and people who come to our door seeking food for the day. Each person we serve in our shelter receives masks so that they can protect themselves and others with whom they come in contact.

NPO Name	Beneficiaries		
	Staff and Volunteers	Vulnerable Groups	High-risk Public Service Workers
St. Augustine Catholic Church, Team HOPE	✓	✓	
Donation Size	30,000 Single-use Masks		

Thanks to your generous donation we have so far been able to distribute masks to three senior residences in the District that were short of masks as well as several homeless individuals living on the streets in various locations across the city; communities regularly serviced by Team HOPE. The faces in these locations change on a regular basis so the need to revisit and provide masks is an ongoing effort. In addition to these locations, future distributions are planned to include homeless tent encampments.

The Flagstone Foundation by supporting us has also made it possible for us to provide much needed masks to one of our sister churches, St. Martin of Tours Church, which exist in a disadvantaged community in the Northeast section of the District.

Thanks to your help, despite the short notice, St Augustine parish was prepared with a sufficient number of masks to assure the safety of all of the church members who began returning to church after several months of closure. The face masks provided along with other precautions that we have put in place have been invaluable in protecting the community from unnecessary risk.

Initial Distribution in July,2020 :

St. Augustine Church Distribution to Parishioners: 2,000

St Augustine Team Hope Ministry: 1,500

St. Augustine Hospitality Outreach to Seniors: 4,000

St. Martin of Tours Distribution to Parishioners: 2,000

Total: 9,500

Long-term use targets, beyond Initial Distribution (next 4 months):

St. Augustine Church Distribution to Parishioners: 2,500

St Augustine Team Hope Ministry: 15,000

St. Augustine Hospitality Outreach to Seniors: 500

St. Martin of Tours: 2,500

Total: 20,500

Grand Total: 30,000

Maryland



PPE Donated

172,000

Partner Organization Numbers

11

NPO Name

Beneficiaries

**Staff and
Volunteers**

**Vulnerable
Groups**

**High-risk Public
Service Workers**

**Meals on Wheels of Central
Maryland (MOWCM)**

✓

✓

Donation Size

6,000 Single-use Masks

MOWCM, in partnership with the Baltimore City Health Department (BCHD) Division of Ageing and CARE Services, is working to distribute the donated masks to older Baltimore City residents living in senior buildings. On average, MOWCM Need 450 face masks a week for volunteers (food prep and delivery) to serve close to 50k meals per week in MD for home-bound clients (senior and disable) who would call Meals on Wheels for food as needed (around 5k meals/day before COVID-19); The service is provide in six counties in central MD, including Baltimore City and Baltimore County.

NPO Name

Beneficiaries

**Staff and
Volunteers**

**Vulnerable
Groups**

**High-risk Public
Service Workers**

**4mycity, Food Rescue Baltimore, So
What Else Baltimore, Baltimore
Community Food, St Gabriel church,
Amigos of Baltimore County**

✓

Donation Size

26,000 Single-use Masks

By June 28th, 2020, the PPE were distributed to these organization that were present on site on the date of delivery;

- Food Rescue Baltimore 2000 qty
- So What Else Baltimore 4000 qty
- St Gabriel church 4000 qty
- Amigos of Baltimore County 2000 qty

The Remaining masks were kept on site at the St Gabriel church for additional distribution as needed. In the past 6 weeks we have distributed over 7 Million pounds of food to 185 various nonprofit organizations throughout the state of Maryland, New York, New Jersey, DC, Virginia and Pennsylvania. With this large scale of operations we have diminished our supply.

We thank you for the support and greatly appreciated the PPE donation as it was a much need item in relation to our safe operating procedures For Safe Food distribution & Community support services due to Covid 19.

NPO Name	Beneficiaries		
	Staff and Volunteers	Vulnerable Groups	High-risk Public Service Workers
Salvation Army of Central Maryland, Action in Maturity, Baltimore City Fraternal Order of Police	√	√	√
Donation Size	140,000 Single-use Masks		

The Salvation Army in direct partnership with the Baltimore City Health Department's Division of Aging, Action in Maturity, and in close collaboration with the Baltimore City Department of Transportation and other non-governmental agencies in our area received 100,000 disposable masks to distribute to at-risk communities.

The Salvation Army and The Division of Aging coordinated outbreak prevention efforts for seniors, who are among the most vulnerable to be affected. For this effort, we enlisted the assistance of additional partners at the Enoch Pratt Library System, the Commission on Aging Services, and the Mayor's Office of Homeless services to equip residents with disposable masks.

There are over 100,000 seniors who live in Baltimore City. To prevent the spread of infection, the disposable masks were distributed to seniors, the homeless population and those persons visiting the mobile testing sites at locations set up in Baltimore City. The Salvation Army's first ever grocery store -DMG Foods- was established in 2018 to serve low income individuals and families in, or in-close- proximity to, one of several food deserts in Baltimore City. DMG Foods has continued to provide masks at no charge to any shopper needing one to reduce the burden of procuring a mask to individuals for whom this creates a barrier to obtaining food independently.

The masks distributed through our Action in Maturity partnership were provided to seniors living in neighborhoods, residents of 138 senior buildings, persons who access homeless shelters, and

persons who visit mobile COVID-19 testing sites. Along with disposable masks, residents also received Health Department literature with tips on how to prevent the spread of infection.

25,000 masks a week over a 4-week period were distributed over the 92 square-mile area of which Baltimore City, Maryland is comprised. With the assistance of our partners at the Baltimore City Health Department, Department of Transportation, Action In Maturity, and our own Salvation Army corps of volunteers as outlined in the proposal.

25,000 masks a week over a 4-week period through the Health Department and our partners:

- 7500/ week to Commission on Aging partners for distribution in city zip codes with the highest rates of infection
- 7500/ week to residents of 138 Baltimore City senior living facilities
- 5000/ week to mobile testing sites in Baltimore City
- 2500/ week Homeless Shelters
- 1000/ week distributed through Charm City Circulator (Baltimore City's free transit system)
- 750/ week distributed through DMG Foods Grocery Store
- 500/ week distributed to communities through the Enoch Pratt Library
- 250/ week Salvation Army Social Services Division grocery distribution to older adults in Baltimore City

40,000 additional masks were provided to the Baltimore City Fraternal Order of Police for equal distribution to police officers on patrol in Baltimore City. The mask distribution was coordinated by Sgt. Mike Mancuso, FOP Lodge #3 President, to each of the nine district station houses and headquarters for further distribution by the officers in charge in each respective location. It was intended for each patrol officer and detective who comes into contact with the public on a daily basis to receive at least two masks per shift while the supply lasts.

New Orleans



PPE Donated

6,000

Partner Organization Numbers

1

NPO Name

Beneficiaries


Staff and
Volunteers

Vulnerable
Groups

High-risk Public
Service Workers

NOLA Public Schools(NOLA-PS)

√

Donation Size	6,000 Single-use Masks		
<p>Life Preservation Institute’s generous donation of 6,000 disposable face masks was made to support the staff and volunteers at 12 NOLA-PS community feeding sites: Arise Academy, Ben Franklin High School, Bethune Elementary, Carver High School, Livingston High School, Tubman Elementary School, Paul Habans Elementary, Akili Academy, Encore Academy, Martin Luther King Elementary, Hynes Elementary School, IDEA Oscar Dunn.</p> <p>These feeding site locations were evenly distributed throughout Orleans Parish. Donor recipients used these face masks to aid in their work feeding the children of New Orleans. Masks were given to kitchen staff who prepare meals, staff who distribute meals, and volunteers who support each program.</p> <p>Aware of the potential rise in food insecurity, NOLA-PS and its charter organizations quickly organized to create a vast network of community feeding sites. These community feeding sites were strategically located to ensure the maximum impact in each area of New Orleans. Each site offered free and nutritious breakfast and lunch meals to anyone 18 or younger. To mitigate the infection risks of COVID-19, it was vital that all kitchen and administrative staff be equipped with adequate protective equipment. This generous donation of 6,000 disposable face masks allowed for staff to continue serving nutritious meals during this time of increased food insecurity.</p>			
New Haven			
	<p>PPE Donated</p> <p>20,000</p> <p>Partner Organization Numbers</p> <p>1</p>		
NPO Name	Beneficiaries		
	Staff and Volunteers	Vulnerable Groups	High-risk Public Service Workers
Yale-China Association		√	
Donation Size	20,000 Single-use Masks		

As the city gradually unblocks, the students will return to the Yale campus. This batch of donations will be used to protect the health of the students of the School of Nursing at Yale to support the pandemic prevention mechanism they need when they are in practice hospitals and clinics, and when they are moving between laboratories.

Table 5 shows the Delivery record to every NPO we supported.

Table 5 NPOs Delivery List

Name	PPEs	Amount	Delivery Date
New York			
New York City Relief and Rescue Alliance	Single-use Mask	8,000	2020/4/16
The Bowery Mission	Single-use Mask	10,000	2020/4/16
Roman Catholic Diocese of Brooklyn	Single-use Mask	20,000	2020/4/16
Lutheran Social Services of New York	Single-use Mask	10,000	2020/4/20
The Salvation Army Great New York Division	N95	1,050	2020/4/22
The Salvation Army Great New York Division	Single-use Mask	30,000	2020/4/22
Harbor Hill Housing	N95	210	2020/5/8
Roman Catholic Diocese of Brooklyn & catholic charity	Single-use Mask	20,000	2020/5/15
The Bowery Mission	Single-use Mask	40,000	2020/5/21
NYC Relief	Single-use Mask	30,000	2020/5/21
The Salvation Army Great New York Division	N95	1,890	2020/5/28
The Salvation Army Great New York Division	Single-use Mask	120,000	2020/5/28
Roman Catholic Diocese of Brooklyn & catholic charity	Single-use Mask	80,000	2020/5/28
Lutheran Social Services of New York	Single-use Mask	10,000	2020/6/5
Washington DC			
WeCare	Single-use Mask	9,000	2020/5/12
House of Ruth	Single-use Mask	80,000	2020/5/19

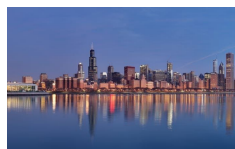
Little Lights Urban Ministries	Single-use Mask	6,000	2020/5/27
House of Ruth	Single-use Mask	40,000	2020/6/10
Central Union Mission	Single-use Mask	30,000	2020/6/10
hope team (Saint Augustine-DC)	Single-use Mask	30,000	2020/6/7
Maryland			
Meals on Wheels of Central Maryland (MOWCM)	Single-use Mask	6,000	2020/4/22
4mycity, Food Rescue Baltimore, So What Else Baltimore, Baltimore Community Food, St Gabriel church, Amigos of Baltimore County	Single-use Mask	26,000	2020/5/20
Salvation Army of Central Maryland, Action in Maturity, Baltimore City Health Department, Baltimore City Fraternal Order of Police	Single-use Mask	140,000	2020/5/28
New Orleans			
NOLA Public Schools(NOLA-PS)	Single-use Mask	6,000	2020/6/22
New Haven			
Yale-China Association	Single-use Mask	20,000	2020/6/26
In Total		774,150	

Promote Civic Engagement and Collaboration

The mission of LPI is not only preserving lives during the pandemic, but also promoting civic engagement and collaboration in our actions. That is why we chose to **involve volunteers from 14 cities** to operate LPI, and encourage local NPOs to collaborate when they apply for our mask donations instead of donating those masks directly to those national organizations or government departments.



Washington DC



Chicago



Beijing



Houston



New York



Maryland



New Orleans



Seattle



Los Angeles



Hunan



Jonesboro



Virginia



New Haven



Shanghai

Connect and Involve in Local Key Opinion Leaders

LPI encourages volunteers to explore more local key opinion leaders to arouse more attention to support healthcare workers and vulnerable groups. We are happy to see New York Councilman Peter Koo and Assistant Speaker of New York Assembly Felix Ortiz join the action of LPI and contribute to call on “united”.

This is not simply about honoring the Asian American community. The Life Preservation Initiative has reminded us that it is our human calling to help one another, regardless of our politics, borders, religion or race. To defeat COVID-19, we must put aside all biases, prejudices and preconceptions. United we stand.

Councilman Peter Koo

“Our first responders are on the front lines helping New Yorkers in this time of a pandemic crisis. They must have the tools they need to get their jobs done. I am pleased to have an

opportunity to join LPI as a volunteer to provide masks for these brave New Yorkers. I hope people can see their efforts, the risks they face and support them.”

Assistant Speaker of New York Assembly Felix Ortiz



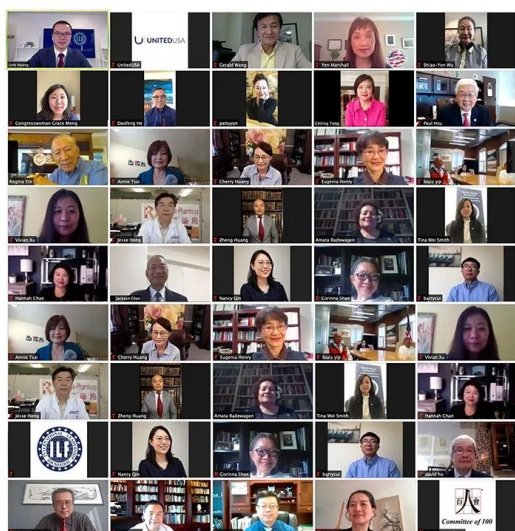
Peter Koo delivered a speech at the Salvation Army donation ceremony in New York



Felix Ortiz participated as a volunteer of LPI in the delivery of masks to the public service department and the community

Honor Volunteerism

To honor volunteerism, we held several advocacy activities encouraging people to engage in providing support to communities and people who fight against viruses on the frontline.



ASIAN AMERICAN AND PACIFIC ISLANDER COMMUNITIES VIRTUAL PRESS ADVOCACY

On May 26, 2020, Daofeng He, Lead Donor, Life Preservation Initiative were invited to join in the Asian American and Pacific Islander Communities virtual press conference convened by grassroots Asian American and Pacific Islander (AAPI) and UnitedUSA, and give a speech to share the story of volunteers of LPI, and call for volunteerism.

TIMES SQUARE BILLBOARD ADVOCACY

On May 27, the LPI volunteers, LPI partner organizations, along with their staff and volunteers were honored with a billboard in Times Square designed by Dongsheng Li, a famous designer in China. Volunteers of LPI, representatives and volunteers of The

Salvation Army Great New York Division and Roman Catholic Diocese of Brooklyn, Fellow members of the Emergency Task Force, NYPD policemen, and EMS Station responders of NY Fire Department gathered together to prompt the spirit of volunteerism.



Under the bright lights, they watched as their name was projected high above the crossroads of the world. They were surrounded by the names of other groups who have also been fighting on the frontlines of the global pandemic.

ASIAN AMERICAN AND PACIFIC ISLANDER HERITAGE MONTH ADVOCACY

On May 28th, 2020, in honor of Asian American and Pacific Islander Heritage Month, The Life Preservation Initiative donated 140,000 non-surgical masks to the Salvation Army of Central Maryland to protect Baltimore City's most vulnerable communities like senior citizens, low-income families, the homeless population, and also first responders.

Mayor Jack Young of Baltimore city, U.S. Congresswoman Amata Coleman Radewagen, Major Gene Hogg, Area Commander, The Salvation Army of Central MD, Chiling Tong, President & CEO, Asian/Pacific Islander Chamber of Commerce and Entrepreneurship, Daofeng He, Lead Donor, Life Preservation Initiative and Bing Rao, President, Flagstone Foundation joined in the Donation and Memorial Ceremony.



Mr. Daofeng He, Lead Donor of LPI had a speech at the ceremony and advocated volunteerism.

A PROFOUND

THANK YOU

TO ALL SPONSORS, DONORS, PARTNERS, AND VOLUNTEERS.

AND TO ALL OF THE HEALTHCARE WORKERS, FIRST RESPONDERS,

AND ALL NPO STAFF AND VOLUNTEERS

FOR YOUR TIME, ENERGY, AND GENEROUS SUPPORT.

Thanks to all of you

Our Partners

U.S. Sponsors

Daofeng and Angela Foundation
Chinese NGO Foundation
Flagstone Foundation

China Sponsors

The Alumni Association of Intensive
English Program at Georgetown
University
Phoenix New Media

Lead Donors

Daofeng & Angela Foundation
Daofeng He, Angela He

Co-Donors

The United States of America-China
Chamber of Commerce
AATTV / Asian American TV
Dr. Cheng-Shing (Daniel) Chen

Supporters

Beijing Health Alliance Charitable Foundation (China)
International Leadership Foundation (US)
Yale-China Association
Tulane University School of Medicine's COVID-19 Response Team

Our Team of Volunteers

Director

Daofeng He, Erin Ye, Xuemei Sun

D.C. Ground Team

Bing Rao, Lance Liang, Jeff Zhang, Jane Jin, Hailey Yingxia Yang, Suhe Harnood, Larry Jiang, Feng Dong, Xiao Hao, Yichuan Xu, Yonghong Shang, Faith Cheung, Andrea, Nathan, Sean Liang, Marilyn Liang, Sherry Bao, Kate Rao, Jessica Rao, Timothy Jiang, Kristie Rao, Linli Feng, Linhai Feng, Sean Purev

New York Ground Team

Nan Yao, Nailin Hou, Lucy Chen, Alex Stein, Yan Hu, Lucy Luo, Bei Wang, Carl Xing, Yvonne Ma, Félix W. Ortiz, Stephanie Yao, Austin Yao, Wei Hu, TingXuan Su, Derrick Leon, Rachel Wang, Huihui Li, Mark Liu, Eric Jiang, Ashlee Tan, XinLi Cao, JianHui Niu, Carol Pan, Na Zhang, Yi Liu, Na Zhang, Jieqi Wang, Konghui Wu, Mingmin Lin, Yanlou Zhang

New Haven Ground Team

Yale-China Association, Dr. Gary Zhou, Dr. Junya Zhu, Dr. Andrew Junker, and Mr. David Youtz.

Washington State Ground Team

Yang Lu, Boyuan Shen, Duoia Wang, Tingting Chen, Kun Chen, Wenjing Xu, Peter Dong

New Orleans Team

Michelle Craig, Liuting Chen, Tulane University School of Medicine's COVID-19 Response Team, Richard A. Montgomery II, Daniellepatrice Payne

Procurement Team

Lance Liang, Feng Dong, Ying Liu, Hongchuan Liang, Fan Zhang, Qinbin Yang, Lin Zhang, Yao Ma, Lingchun Liu, Hongyan Wu

Legal and Accounting Team

Barry Cui

China Communication Team

Yunqing She, Deying Zhu, Mengmeng Xu

U.S. Communication Team

Ada Lu, Stanley He, Selina He, Randy Dong, Judy Yi Zhou, Sisi Guo, Xuemei Feng, Dan Yang, Qing Qin



United, We Stand